



European Centre for Disease Prevention and Control

ECDC hyFive

Katerina Mougkou, ECDC

13. Symposium zum Internationalen Tag der Händehygiene

Vienna, 5 May 2026

The hand hygiene paradox

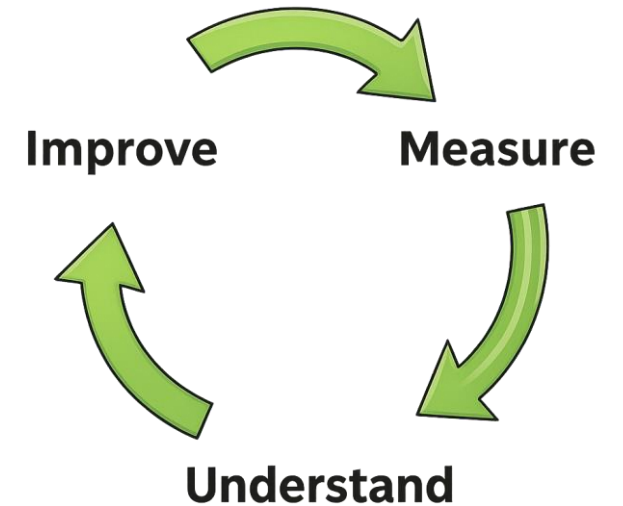
Hand hygiene is one of the **simplest, most effective,** and **least costly** interventions—yet implementation remains suboptimal.

We cannot improve what we do not measure

- Hand hygiene is rarely monitored in a **systematic** way
- Without data, problems remain **invisible**

Monitoring helps:

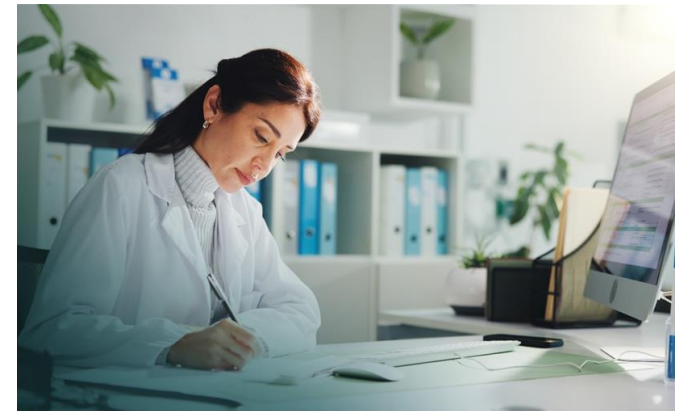
- Understand **where** hand hygiene is missed
- Identify **patterns** and high-risk moments
- **Track** change over time



Monitoring hand hygiene is resource-intensive

Today, hand hygiene monitoring relies on:

- Manual observation
- Paper-based recording
- Manual data entry
- Manual calculation of rates and graphs
- Manual feedback to healthcare workers



Manual monitoring requires time and resources that IPC teams often do not have

Digital monitoring tools

Faster and standardised data collection

Fewer transcription errors

Automatic compliance calculations

One-click generation of graphs

Real-time feedback to staff

Easier reporting

Data security and storage

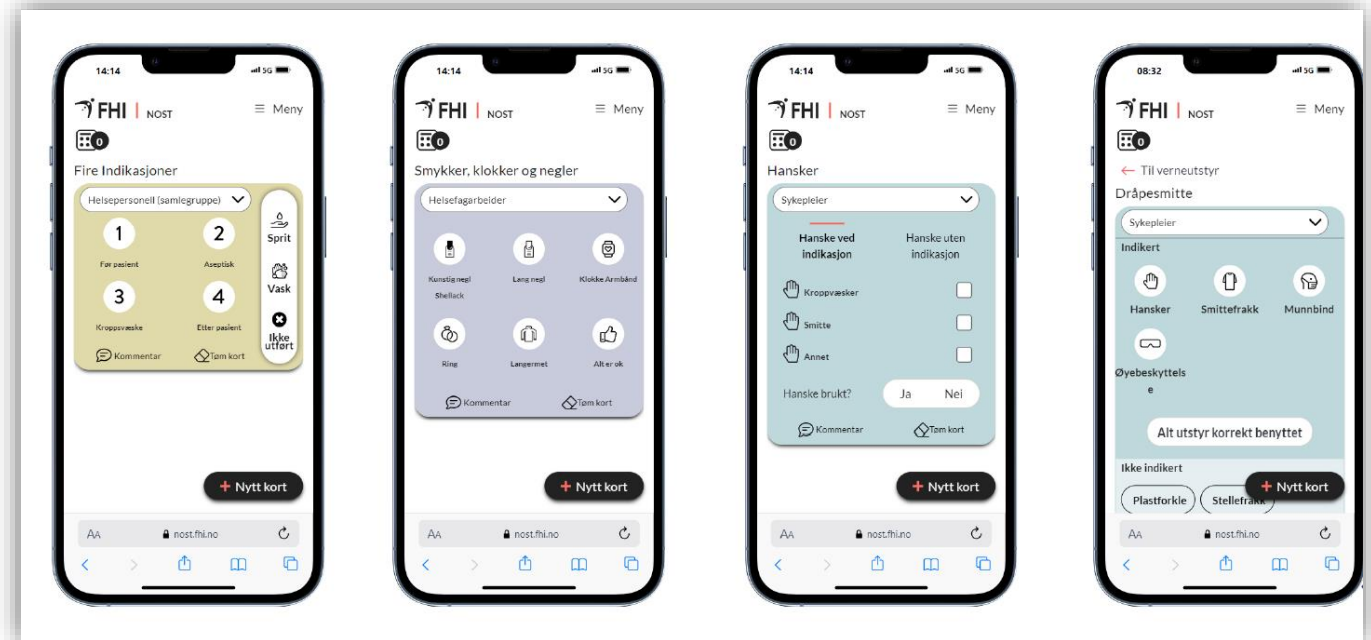
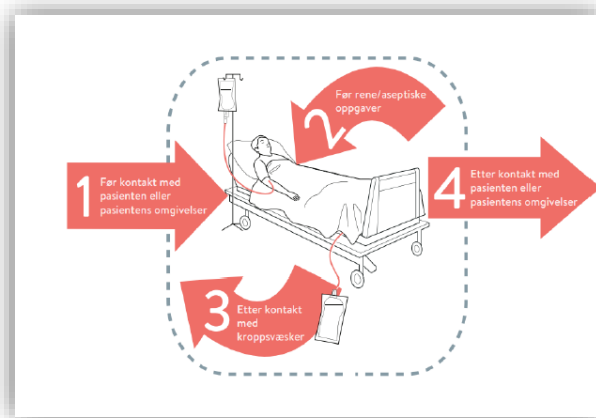


ECDC hand hygiene monitoring tool



From NOST to hyFive

- **NOST:** A digital tool for observation of infection prevention measures that was developed and managed by the Norwegian Public Health Institute
- Two-factor authorisation log in
- One tool, four modules



Technology Overview

Simple, secure, and accessible across all devices



ECDC | hyFive

Progressive Web App (PWA):

- **Web application using modern web technologies** to deliver an app-like experience directly through a web browser
- **Installable:** Can be added to the home screen or desktop with a dedicated icon without downloading from an app store
- **Responsive:** Design adjusts to fit any form (desktop, mobile, tablet)
- **Safe:** Must be served via HTTPS to ensure security
- **Works offline**

- **Provided free of charge by ECDC** to support harmonised implementation of infection prevention and control practices across the EU.
- **Currently in English language**, with **planned translation into all EU languages** to ensure accessibility, equity and broad uptake.

Modules

- Hand hygiene – Aligned with **WHO's five hand hygiene moments**
- Glove use
- Bare below elbows

Deployment and Governance

- Designed for **local implementation** by countries and individual healthcare facilities.
- **No central data hosting or data collection by ECDC**, ensuring full ownership, data protection compliance, and local governance.

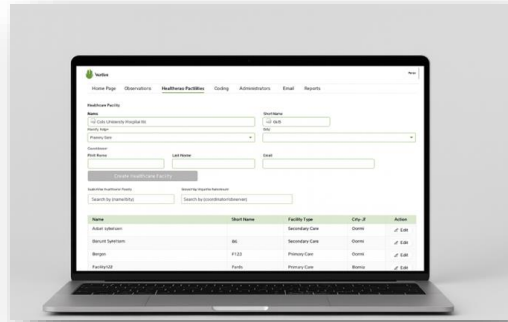
hyFive: How it works

ECDC | hyFive

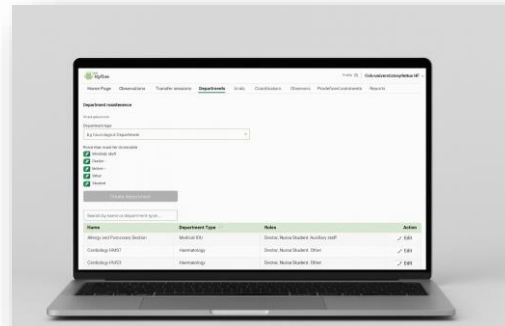


Two user interfaces – Three roles

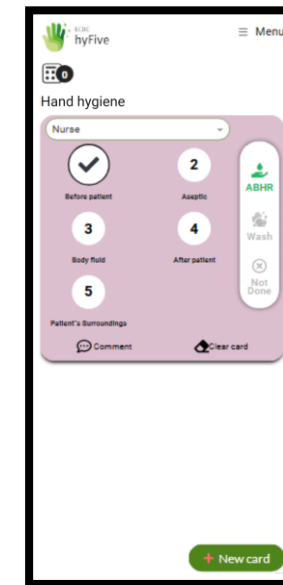
Administrator



Coordinator



Observer



National level

Healthcare facility level

Hand hygiene compliance at a glance

The screenshot shows the 'Reports' section of the ECDC hyFive application. The top navigation bar includes 'Home Page', 'Observations', 'Healthcare Facilities', 'Administrators', 'Email', and 'Reports'. The left sidebar contains 'Hand Hygiene', 'Compliance', and 'Downloads (Excel)'. The main content area features several filters: 'Facility Types' (with a dropdown menu), 'Healthcare facilities' (with a dropdown menu), 'To year' (with a text input field set to '2026'), and 'Departments' (with a dropdown menu). A 'Show graph' button is visible. The bar chart on the right, titled 'Compliance (%)', displays data for the year 2026 across six categories: All indications, Before patient, Aseptic, Body fluid, After patient, and Patient's surroundings. The y-axis represents Compliance (%) from 0% to 100%.

Bare Below Elbows

Artificial nails/Shellac Long nails Watch/Bracelet

Ring Long sleeves All is ok

Comment + New card

Glove Use

Gloves

Doctor

Gloves with indication Gloves without indication

Body fluids

Contact precautions

Other

Gloves used? Yes No

Comment Clear card

ECDC | hyFive Menu

Hospital A Observer: Observer Wash

Healthcare Facility: Hospital A

Department: General surgery A

Unit: Surgical 1

Type observation

Hand hygiene

Bare below elbows

Gloves

Select profession(s)

Doctor Nurse Student

Auxiliary staff Other

Start observation

ECDC | hyFive Select Language: English Profile

Home Page Observations Healthcare Facilities Administrators Email **Reports**

Downloading data for a healthcare facility or department on Excel-format

Hand Hygiene Compliance **Downloads (Excel)**

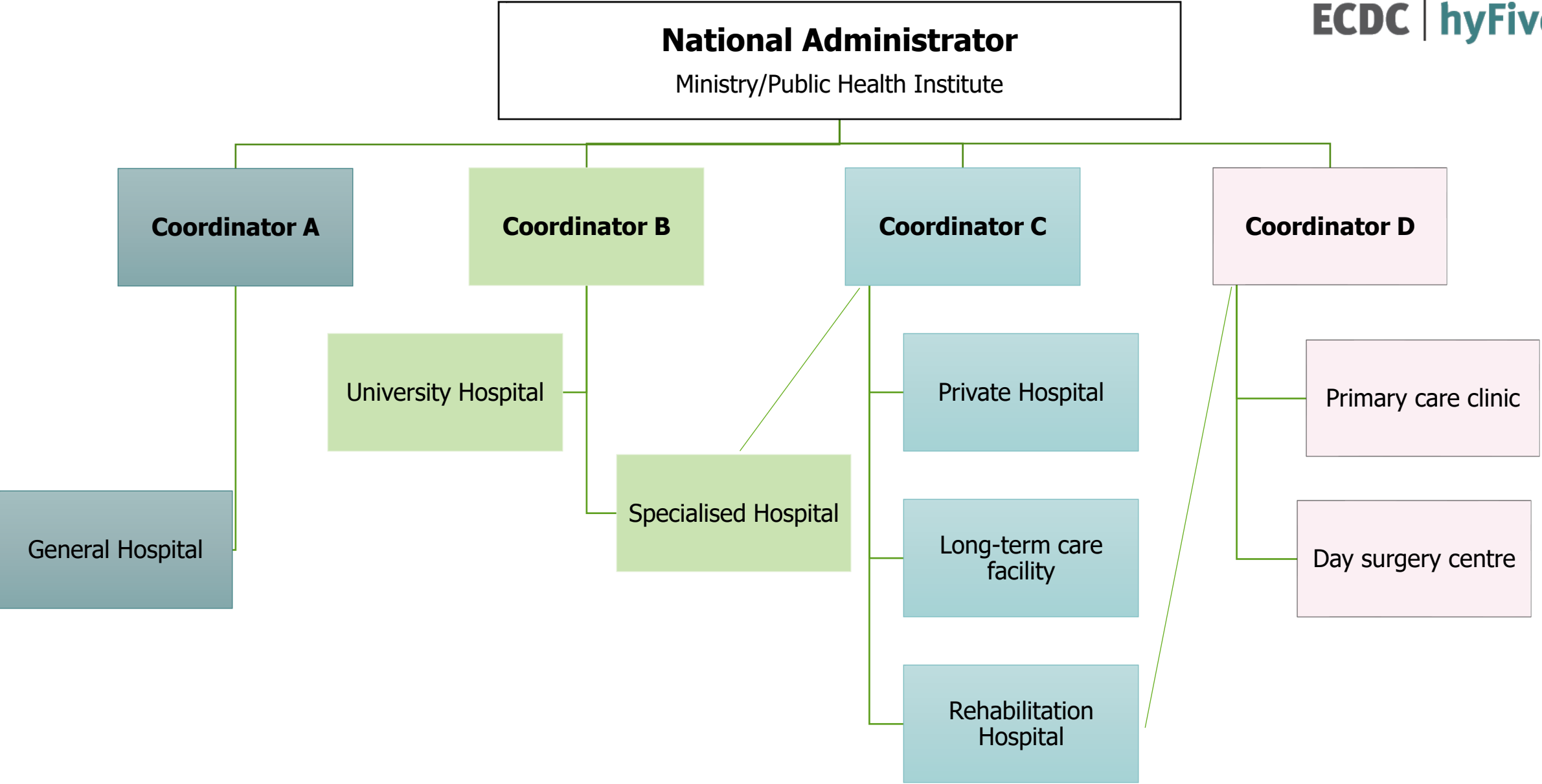
Healthcare facilities: Select healthcare facilities

Departments: Select departments Module: Bare Below Elbows

From Date: mm/dd/yyyy To Date: mm/dd/yyyy

Download file Clear Filters

Deployment



Next steps for hyFive deployment

ECDC | **hyFive**

Visit hyFive website

 <https://ecdc.europa.eu/hyfive>

- ✓ Step-by-step installation manuals
- ✓ Short video tutorials
- ✓ FAQs and support resources

Contact us

- ✓ hyfive@ecdc.europa.eu





ECDC | **hyFive**

Thank you

katerina.mougkou@ecdc.europa.eu