
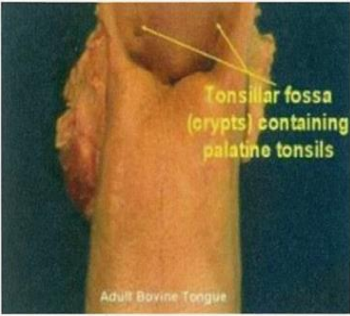

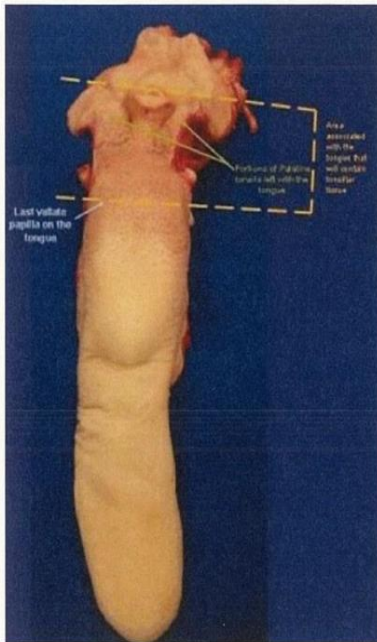


**Additional Information & Diagrams Regarding the Removal of Tonsils in Cattle**

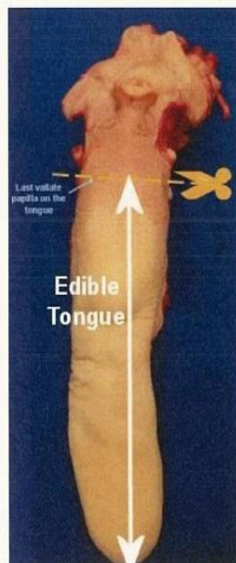
 <p>Click to Enlarge</p>	<p>These pictures identify the first step in the removal process. Typical head dressing procedures result in tongues, similar to these, being presented with associated tissues including lymph nodes, fatty tissues, salivary glands, and tonsils (i.e. palatine and lingual tonsils). Since these tonsils are SRM, they are to be removed.</p>
 <p>Click to Enlarge</p>	<p>Photo demonstrating the location of the palatine fossa (crypts) which contain the palatine tonsils.</p> <p>These tonsils are SRM and are to be removed.</p>
	<p>Photo identifying the vallate papillae.</p> <p>Isolation of the edible portion of the tongue from the lingual tonsil will be accomplished by making a transverse cut just behind the last (most rear) vallate papilla.</p>

Click to Enlarge



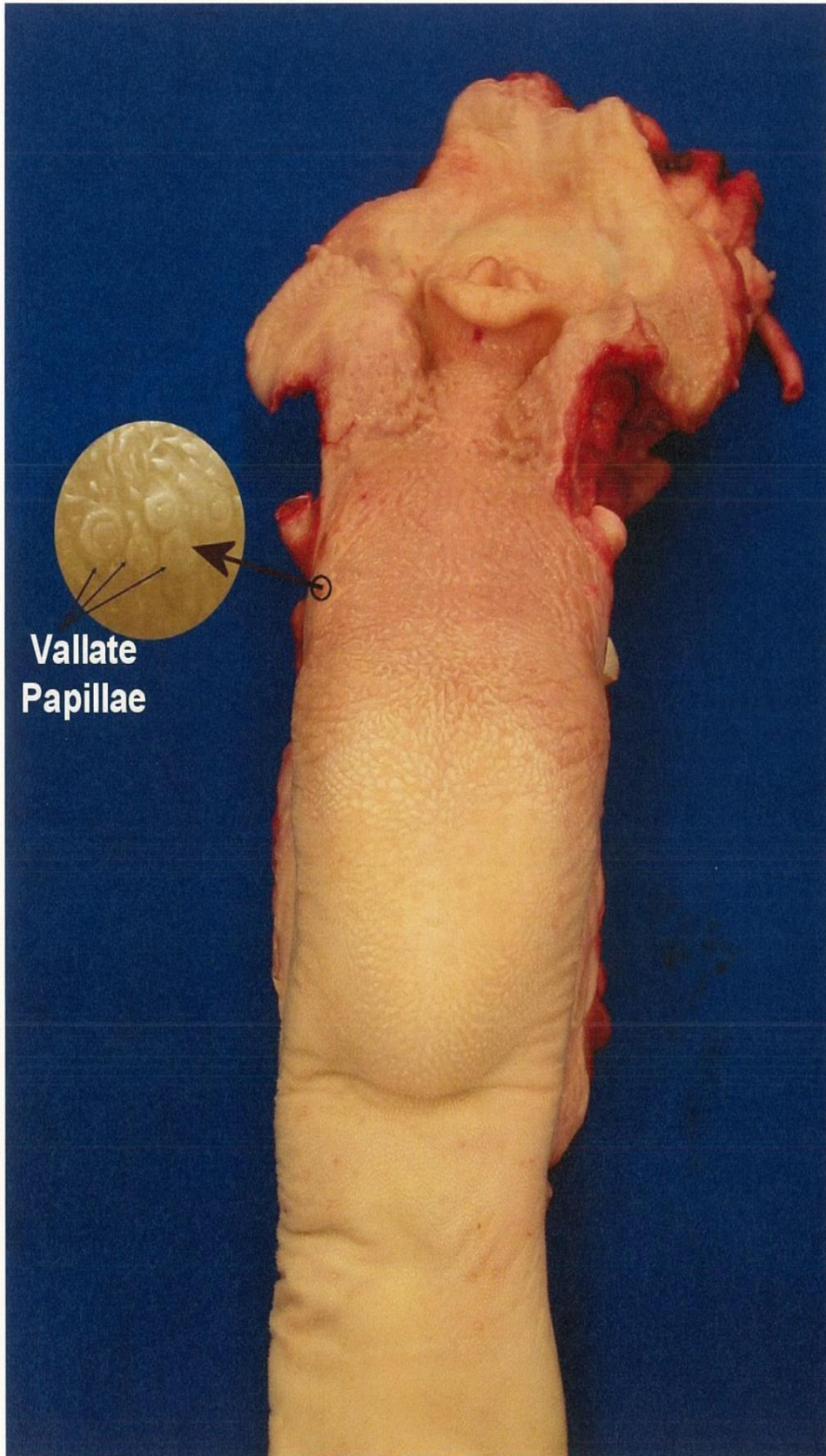
This photo further identifies the specific portion of the tongue containing both sets of tonsils (i.e. lingual and palatine) which are SRM.

Click to Enlarge



Removal of the edible portion of the tongue is accomplished by making a transverse cut (yellow line) just behind the last vallate papilla.

Click to Enlarge



**Vallate  
Papillae**

